



# JAN 2023 VACATION CARE - Week 1

## Waniora Public School

January Opening Hours: **7:30am - 6pm**

Monday 9th Jan

### MORNING: Minute To Win It

Get into teams and work your hardest to complete the challenges in just one minute! Fun prizes on offer.

### AFTERNOON: Fizzy Firework Craft + Pop Rockets

Let's start 2023 off with a bang as we create some firework art and set off some pop rockets!

**Base Fee:** \$62.00

**\*Exp. Fee:** \$0

**Daily Total:** \$62.00

**\*\*After Max CCS:** \$9.30

Tuesday 10th Jan

### MORNING: Amazing Race 2.0 (Excursion)

A Fit Futures vacation care favourite! Decipher the clues, complete the challenges, and be the first team to make it to Bulli Beach.

### AFTERNOON: PJs, Movie and Popcorn

Let's change into our PJs and relax with a movie and popcorn.

**Base Fee:** \$62.00

**\*Exp. Fee:** \$0

**Daily Total:** \$62.00

**\*\*After Max CCS:** \$9.30

Wednesday 11th Jan

### MORNING: Ten Pin Bowling at Northern Bowl (Excursion)

Get your bowling shoes on this morning as we head to Northern Bowl for some ten pin bowling!

### AFTERNOON: DIY Slap Bracelets

Spend the afternoon being creative as we design and decorate our own slap bracelets.

**Base Fee:** \$62.00

**\*Exp. Fee:** \$23.00

**Daily Total:** \$85.00

**\*\*After Max CCS:** \$12.75

Thursday 12th Jan

### MORNING: Bring Your Wheels/Billy Carts

Bring your bikes, scooters and skateboards or have a turn on the Fit Futures Billy Carts as we ride around the school. Don't forget a helmet!

### AFTERNOON: Bucket Hat Designs

Stay sun safe this summer with a bucket hat designed by you!

**Base Fee:** \$62.00

**\*Exp. Fee:** \$7.00

**Daily Total:** \$69.00

**\*\*After Max CCS:** \$10.35

Friday 13th Jan

### MORNING: Team Building Games

Develop your communication and team work skills as we engage in a morning full of team building games.

### AFTERNOON: Sensory Play

Engage in some sensory play with squishies, kinetic sand, cloud dough and more!

**Base Fee:** \$62.00

**\*Exp. Fee:** \$3.00

**Daily Total:** \$65.00

**\*\*After Max CCS:** \$9.75

\*Experience/activity fee. Programs may be subject to change.

\*\*Child Care Subsidy may apply



# JAN 2023 VACATION CARE - Week 2

## Waniora Public School

January Opening Hours: **7:30am - 6pm**

Monday 16th Jan

### MORNING: Baking

Work with Educators in small groups to bake some marvellous creations. Did someone say rainbow lamingtons?!

### AFTERNOON: Hanging Planters

Let's get crafty and design some hanging planters to take home.

**Base Fee:** \$62.00

**\*Exp. Fee:** \$5.00

**Daily Total:** \$67.00

**\*\*After Max CCS:** \$10.05

Tuesday 17th Jan

### MORNING: HOYTS Movie Theatre

#### (Excursion)

Let's head to HOYTS movie theatre Warrawong for a fun morning out with a movie and some popcorn. Movie TBC.

### AFTERNOON: Cushion Covers

Design and decorate a cushion cover with us! Take it home and display your masterpiece on the family lounge.

**Base Fee:** \$62.00

**\*Exp. Fee:** \$20.00

**Daily Total:** \$82.00

**\*\*After Max CCS:** \$12.30

Wednesday 18th Jan

### MORNING: Magnet Making

Create a gorgeous home made magnet for your fridge or to give as a gift to friends or family!



### AFTERNOON: Reptiles Up Close (Incursion)

Crocodiles, snakes and lizards... get up close with some reptiles this afternoon with Brett from Reptiles Up Close!

**Base Fee:** \$62.00

**\*Exp. Fee:** \$15.00

**Daily Total:** \$77.00

**\*\*After Max CCS:** \$11.55

Thursday 19th Jan

### MORNING: Soaked!

This morning we will make some sponge water bombs, have fun with some water relay races and have a go on the slip'n'slide!

### AFTERNOON: DIY Cold Rock

Let's cool down after a morning in the sun with some ice cream! Mix and mash your favourite additions to make your own 'Cold Rock'.

**Base Fee:** \$62.00

**\*Exp. Fee:** \$3.00

**Daily Total:** \$65.00

**\*\*After Max CCS:** \$9.75

Friday 20th Jan

### MORNING: Sun Catchers

Capture the Summer sun as we create some sun catchers to take home and hang in the window.

### AFTERNOON: Gymnastics

This afternoon we will bounce on the trampoline, roll down the wedge and swing on the high bar as we engage in some Fit Futures gymnastics.

**Base Fee:** \$62.00

**\*Exp. Fee:** \$3.00

**Daily Total:** \$65.00

**\*\*After Max CCS:** \$9.75

\*Experience/activity fee. Programs may be subject to change.

\*\*Child Care Subsidy may apply



# JAN 2023 VACATION CARE - Weeks 3 + 4

## Waniora Public School

Monday 23rd Jan

### MORNING: Scary Senses

Taste something strange, touch something slimy, and smell something weird. Are you brave enough to complete the 'scary senses' challenges?

### AFTERNOON: Puffy Paint Pencil Cases

Get ready for school to return as we design and decorate our own pencil cases.

**Base Fee:** \$62.00

**\*Exp. Fee:** \$5.00

**Daily Total:** \$67.00

**\*\*After Max CCS:** \$10.05

Tuesday 24th Jan

### MORNING: Fit Futures Fun Fair

Ring toss, balloon pop, knock 'em down and face painting! This morning we will participate in the Fit Futures Fun Fair.

### AFTERNOON: Design a Clock

Can you tell the time? This afternoon we will decorate and take home an analog clock.

**Base Fee:** \$62.00

**\*Exp. Fee:** \$10.00

**Daily Total:** \$72.00

**\*\*After Max CCS:** \$10.80

Wednesday 25th Jan

### MORNING: Nippers at Bulli Beach (Excursion)

Water activities, sand races and beach safety. This morning we will walk to Bulli Beach for a jam-packed nippers morning.

### AFTERNOON: Trivia - Australia Themed

Let's celebrate Australia by testing our knowledge of this beautiful country we get to call home! Fun prizes to be won.

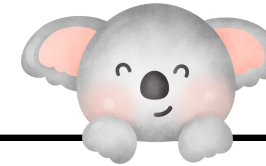
**Base Fee:** \$62.00

**\*Exp. Fee:** \$0

**Daily Total:** \$62.00

**\*\*After Max CCS:** \$9.30

Thursday 26th Jan



**PUBLIC HOLIDAY**



\*Experience/activity fee.

Programs may be subject to change.

\*\*Child Care Subsidy may apply

Friday 27th Jan

### MORNING: Sushi Making

A common request at Fit Futures OSHC! This morning we will make some sushi. We will pop it in the fridge and eat it for lunch!

### AFTERNOON: DIY Wooden Bird House

Decorate your own wooden bird house and take it home to look after your feathery friends!

**Base Fee:** \$62.00

**\*Exp. Fee:** \$5.00

**Daily Total:** \$67.00

**\*\*After Max CCS:** \$10.05

Monday 30th Jan

### MORNING: Colour Run 2.0

Another vacation care favourite! Wear something white and bring some sunnies to participate in the Fit Futures colour run!

### AFTERNOON: End of Holiday Party

Our traditional end of holiday party! Lots of fun will be had and look out for an exciting announcement from Fit Futures for 2023!

**Base Fee:** \$62.00

**\*Exp. Fee:** \$5.00

**Daily Total:** \$67.00

**\*\*After Max CCS:** \$10.05

January  
Opening Hours:  
**7:30am - 6pm**

# IMPORTANT INFORMATION



## APPROXIMATE DAILY TIMETABLE

- 7:30am:** Centre opens  
**7:30am-9am:** Children arrive, free play at a variety of stations  
**9am-10:30am:** Morning activity  
**10:30am-11am:** Morning tea  
**11am-12pm:** Outside play  
**12pm-1pm:** Lunch  
**1pm-2:30pm:** Afternoon activity  
**2:30pm-3pm:** Afternoon tea  
**3pm - 6pm:** Free play at a variety of stations/group games  
**6pm:** Centre closes

## WHAT TO PACK

- Morning tea and afternoon tea
- Water bottle
- Hat
- Spare change of clothes
- Please wear enclosed shoes

## FOOD

A cooked lunch will be provided daily, as well as a fruit platter. Please pack enough snacks for both morning and afternoon tea. Please note that we are a **nut-free** centre.

## EXCURSIONS/INCURSIONS

On the dates below vacation care will include an excursion or incursion. Permission notes with further details about these activities will be provided closer to the date. If you have any questions about these activities or experiences in the meantime please email Georgia at [oshc@fitfutures.com.au](mailto:oshc@fitfutures.com.au).

- **Tuesday 10th January:** Amazing Race 2.0 to Bulli Beach (Walking excursion).
- **Wednesday 11th January:** Northern Bowl (Excursion by bus).
- **Tuesday 17th January:** HOYTS Movie Theatre Warrawong (Excursion by bus).
- **Wednesday 18th January:** Reptiles Up Close (Incursion at Waniora PS).
- **Wednesday 25th January:** Nippers at Bulli Beach (Walking excursion).

## MEDICAL CONDITIONS

If your child is new to Fit Futures and has asthma, anaphylaxis, allergies or any other medical condition, please provide medical management plans by uploading these to your new Xplor account or by sending them directly to Georgia (Coordinator) at [oshc@fitfutures.com.au](mailto:oshc@fitfutures.com.au)

Please bring any medication needed in its original packaging and clearly labelled with your child's name and the use-by date. A risk management plan will be completed with Georgia on your child's first day of attendance.

## BOOKINGS/PAYMENTS

If you are a regular at Fit Futures OSHC, you can make a booking through the Xplor app as you normally would for before/after school care, just make sure you **select Vacation Care Jan 2023**. Please note that the base fee will be shown at the time of booking and any experience fees will be added after the booking has been made. The fees will be added to your account as usual and the **Service NSW Vouchers can still be used towards these fees**.

If you are new to Fit Futures, please email Georgia at [oshc@fitfutures.com.au](mailto:oshc@fitfutures.com.au) or complete an online enrolment form here: [https://prodadmin.myxplor.com/enrollment\\_v2/centre/5fZjnKf94231QxUolvbMseGDnA](https://prodadmin.myxplor.com/enrollment_v2/centre/5fZjnKf94231QxUolvbMseGDnA)